



2024/25 Golf Participation Report

Published by Golf Australia
December 2025

golf.com.au





Jeff Blunden
Managing Director



Kimberley Patterson
Finance Consultant

ABOUT THE AUTHORS

This report has been prepared for Golf Australia by Golf Business Advisory Services (GBAS).

Providing independence of data analysis and consistent interpretation of annual data, GBAS has authored all of past published participation reports for Golf Australia, along with a number of other leading industry reference reports.

For more information on GBAS, please visit
www.golfbas.com



Artwork & design by
Brand Media & Consulting

www.brand-media.com.au



00

Contents

Foreword5**Key Findings7****Report Background9****Golf Participation.....11**

KAP Research/Deakin University Golf Participation Study	12
Definitions	12
AusPlay Golf Participation Data	13

Annual Programs.....14

MyGolf Program	15
Get Into Golf	16
TeeMates	17
AGF Junior Girls Scholarship Program	18
National Program Deliverer Network	19
PGA Professionals and Program Delivery	20
Disability Inclusion Program	20

Club Membership21

State Golf Association Reporting	22
Definitions	22
Playing Members: Overall Results	23
Profile of Australian Clubs	25
Playing Members: Key Segments	26
Playing Members: Age Profile	29

**Playing Members: Results by
State-Based Districts..... 31**

New South Wales	32
Victoria	33
Queensland	34
Western Australia	35
South Australia	36
Tasmania	37
Northern Territory	37

Competition Rounds.....38

Total competition rounds	39
Average competition rounds per member	39
Average competition rounds per member by age	39



01

Foreword





James Sutherland

Chief Executive Officer
Golf Australia

Golf in Australia has never been bigger or stronger.

For the first time, more than four million Australians played golf in some form in the last year. That's one in every seven people across the country swinging a club at a course, a driving range, a simulator, or a mini golf venue.

This is a defining milestone for our sport. It tells us that golf is not just growing, it's evolving. With participation up by 5.2% this year, there is plenty to unpack.

Let's start with club membership which is up 3.5% year on year.

The rise in golf club membership, reaching 477,220 members nationwide, marks the fifth consecutive year of membership growth, up a remarkable 24.7% since 2017/2018, the strongest and most sustained period of growth in three decades.

This momentum is being felt everywhere: from regional clubs experiencing record community engagement, to metropolitan facilities welcoming a new generation of players through their doors.

The report shows young people are flocking to the sport with 38% of new club members in the last year under the age of 35, near double the level of existing members in this age bracket (17%). This is a clear sign of strong junior pathways, driven by our participation programs which are thriving through the support of clubs, PGA professionals, and other key stakeholders around the country.

Membership among under-18s grew by 18.2%, led by strong results in Queensland, Victoria and New South Wales.

Each one of our national participation programs are at record levels of participation. MyGolf powered by Ripper GC delivered another record year with over 40,000 registrations, up 11.2%, while TeeMates, our flexible junior membership community, grew 25.2%. For adults new to golf, Get Into Golf continues to be a welcoming entry point, up 10.1% year-on-year, with women representing almost 88% of all participants.

The Australian Golf Foundation's Junior Girls Scholarship Program expanded again this year with 1,400 girls across 160 clubs, helping girls build confidence, friendships, and a lasting love of the game.

Social club membership continues to surge, growing 14.8% in the last year – and providing a worthy stepping stone to traditional club membership. As new and returning golfers look for flexible ways to play regularly and maintain a GA Handicap, social memberships have become one of the sport's most powerful entry points. Over the past five years, they have grown at 10.7% per annum, more than triple the rate of traditional club memberships (2.8% per annum). Today, almost one in 10 club-affiliated golfers is a social club member. Whilst it is the fastest-growing membership category in Australian golf, the facts show that for many on their own golfer journey, this is a popular step towards traditional golf club membership.

These programs highlight what makes golf special, the ability to welcome anyone, anywhere, at any stage of life. When newcomers are met with friendly faces, flexible options and fun experiences, they lean in and stay. They become golfers for life.

One of golf's greatest strengths is that there's no one way to play. Over 1.6 million Australians teed it up at an off-course venue in 2024–25, whether at driving ranges, indoor simulators or entertainment-style facilities. Off-course golf continues to fuel on-course participation, bringing new audiences into the game and reshaping how Australians experience golf.

Golf is also having a cultural moment. Young people are flocking to the game, inspired by a wave of global and local influencers who've made golf part of mainstream culture, from professionals like Bryson DeChambeau and Min Woo Lee engaging broader online audiences, to creators like The Inspired Unemployed, and celebrities such as Justin Bieber, Steph Curry, LeBron James and others, all sharing their love for the game.

That visibility is drawing new audiences to pick up a club for the first time, while technology is helping keep them in the game. From coaching videos and on-course content to launch monitors and simulators that make improvement measurable and fun, technology is transforming how people learn, connect and stay engaged. The modern golf experience is relatable – and has never been more social, visible or accessible.

Beyond participation, the broader impact of golf is extraordinary. The Community Benefits of Golf in

Australia report (2023) found the sport contributes \$10.3 billion in total economic activity each year, including \$3 billion in community benefits and \$860 million in physical and mental health gains. Golf isn't just good for the people who play it, it's good for Australia.

This success is no accident. It reflects the collective effort of the entire industry working together under the Strategy for Australian Golf (2022–2025), a united approach driven by Golf Australia, the PGA of Australia, the WPGA Tour of Australasia, and countless clubs, facilities and partners across the country.

Of course, growth brings growing pains and other challenges. Increased participation and demand require continued investment in facilities, workforce, and innovation. But these are good challenges to have, a sign of a healthy, dynamic sport.

To everyone who has played a role in this success, our club managers and committees, PGA Professionals, venue operators, volunteers, junior coaches, greenkeepers, staff and everyone in the golfing community – thank you. This is a great time to be working in golf – and your commitment and passion are a key reason why our sport continues to reach new heights.

Golf in Australia has never been more vibrant, more inclusive, or more exciting. We've passed four million players for the first time, and the best part is, we're just getting started.

With best regards,

James Sutherland
Chief Executive Officer
Golf Australia



02

Key Findings

CLUB MEMBERSHIP

(incl. Social Clubs)

METROPOLITAN
1.5% Growth
172,326
Club Members
202 Clubs

REGIONAL
3.0% Growth
259,333
Club Members
1,080 Clubs

SOCIAL
14.8% Growth
45,561
Club Members

477,220
2025 Club Members
16,022
New Members
3.5% Increase from FY24

SEGMENT PARTICIPATION

KAP Research & Deakin University

477,220
Golf club members
played a round of golf
(on-course only)

1,907,780
Played a round of
golf

740,000
Use outdoor
hitting facilities

192,000
Use indoor
hitting facilities

680,000
Played
mini golf

GOLF TOTAL PARTICIPATION

KAP Research & Deakin University

1.3m
ON-COURSE
ONLY

Avg. age **43**

30% women

76%
Australian born

3.8
GOLF INTEREST
(1-7)

1.1m
BOTH
ON/OFF

Avg. age **41**

29% women

76%
Australian born

4.3
GOLF INTEREST
(1-7)

1.6m
OFF-COURSE
ONLY

Avg. age **38**

50% women

74%
Australian born

2.7
GOLF INTEREST
(1-7)

GROWTH IN PARTICIPATION PROGRAMS

MyGOLF
11.2%
40,736
Participants

GET INTO GOLF
10.1%
20,156
Participants

AUSTRALIAN GOLF FOUNDATION | **Junior Girls Scholarship Program**
20.2%
1,432
Participants

GROWTH IN PARTICIPATION PROGRAMS

NATIONAL PROGRAM DELIVERER
33.1%
659
Accreditations

ALL ABILITIES PARTICIPANTS
-5.9%
547
Participants

MEMBERSHIP GROWTH

by state since FY24
(excl. Social Clubs)

1.3%
NSW
169,588

4.6%
VIC
111,564

4.2%
QLD
76,615

3.3%
WA
31,071

-3.9%
SA
27,957

0.3%
TAS
12,809

3.2%
NT
2,055

03

Report Background

Introduction

Golf Australia continues to provide the golf industry with information that enables an understanding of the current landscape and trends with regards to golf participation. This is the 12th edition of the National Club Participation Report, a key component in Golf Australia's industry education and communication strategy.

This report examines the overall health of the game from a participation perspective and remains an invaluable reference as clubs and other industry stakeholders seek to understand current trends.

With knowledge of these trends, evidenced-based strategies can be developed that seek to enhance demand and increase the game's long-term popularity.



04

Golf Participation



KAP Research/Deakin University Golf Participation Study

During 2025 Golf Australia conducted research supported by Adam Karg of KAP Research and Deakin University to measure demand in all forms of golf participation. This research details the ways in which golf is being played and the behaviours and characteristics that are evident within golf's participation base.

Consistent with 2024, this research has found that off course participation numbers now exceed those participating on course. A higher percentage of women and younger people continue to participate via this channel.

Chart 1 illustrates the current golf participation mix.

In terms of venues utilised, the KAP Research shows that golfers can be split into three types, those who play only on course, those who play only off course and those who play both.

Chart 2 illustrates the participation mix and key demographic traits.

Definitions

On-course only

Members

A golf club member.

Round Players

Not a club member, played a 9-18 hole round of golf (incl. short courses).

Both on/off course

Outdoor Hitters

An on-course golfer, but also played at a driving range or outdoor practice/entertainment centre.

Off-course only

Indoor Hitters

No on-course golf, no outdoor practice, but played at a simulation or indoor training centre.

Mini Golf (only)

Only played mini golf.

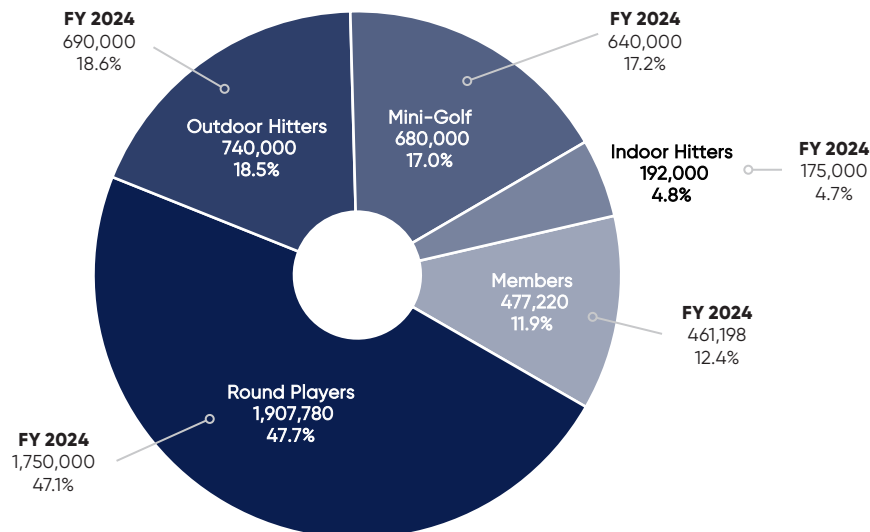


Chart 1: Current golf participation mix, with FY 2024 comparison

Source: KAP Research/Deakin University Golf Participation Study, Golf Australia and member golf associations

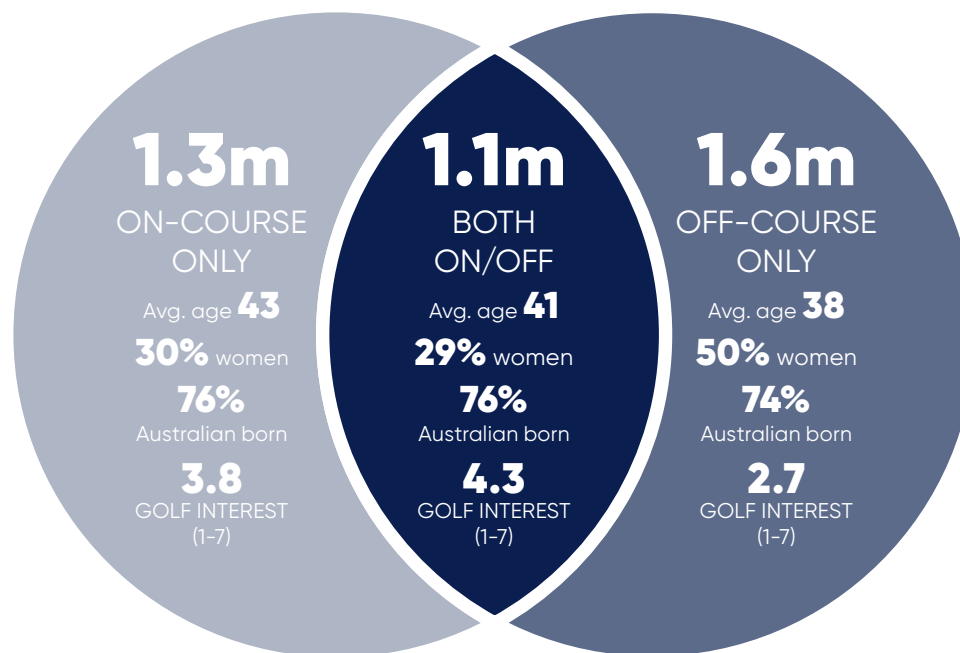


Chart 2: Participation mix and key demographic traits

Source: KAP Research/Deakin University Golf Participation Study

AusPlay Golf Participation Data

Results from the latest (2024-25) AusPlay National Participation Survey have recently been released by the Australian Sports Commission. We will continue to report these figures in comparison to previous years as though there has been no change in methodology.

Table 1: Annual golf participation and participation rates by gender

Year	Participation			Participation Rate		
	Male	Female	Total	Male	Female	Total
2016	836,600	185,500	1,022,100	8.6%	1.9%	5.2%
2016-17	817,110	185,610	1,002,720	8.3%	1.8%	5.0%
2017	785,339	193,287	978,626	7.9%	1.9%	4.9%
2017-18	768,743	177,196	945,939	7.7%	1.7%	4.7%
2018	753,742	202,174	955,916	7.5%	2.0%	4.7%
2018-19	708,811	208,063	916,874	6.8%	2.0%	4.4%
2019	695,012	182,901	877,913	6.8%	1.7%	4.2%
2019-20	785,565	209,849	995,414	7.7%	2.0%	4.8%
2020	890,656	239,887	1,130,543	8.6%	2.2%	5.4%
2020-21	974,343	229,738	1,204,081	9.3%	2.1%	5.7%
2021	996,293	232,245	1,228,538	9.4%	2.1%	5.7%
2021-22	990,563	235,424	1,225,987	9.3%	2.1%	5.7%
2022	1,057,002	256,625	1,313,627	9.9%	2.3%	6.0%
2022-23	1,019,961	259,503	1,279,464	9.4%	2.3%	5.8%
2023-24	763,527	190,762	954,289	7.1%	1.7%	4.4%
2024-25	872,197	213,146	1,085,343	7.8%	1.8%	4.7%

Source: AusPlay

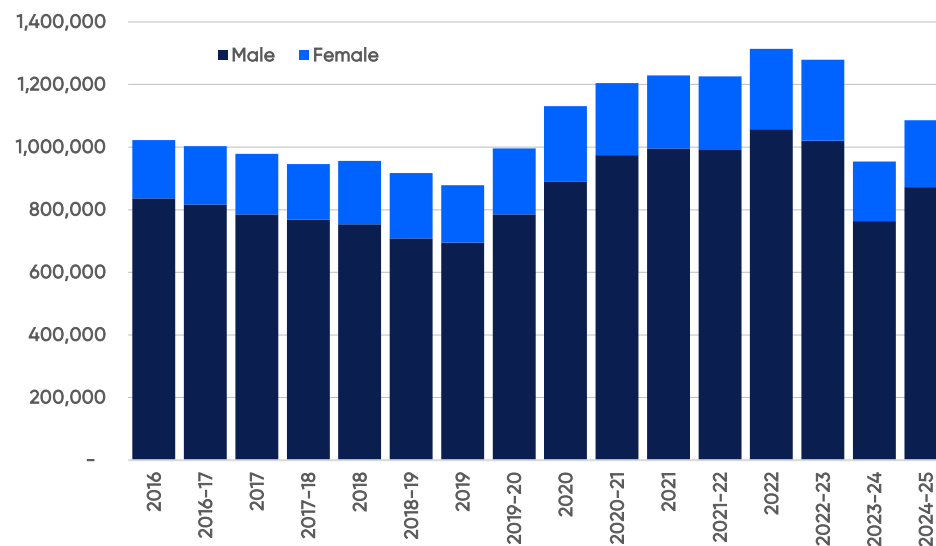


Chart 3: Annual golf participants

Source: AusPlay

05

Annual Programs

Golf Australia delivers a number of national entry level programs for kids and adults. Annual results for these programs are detailed below.





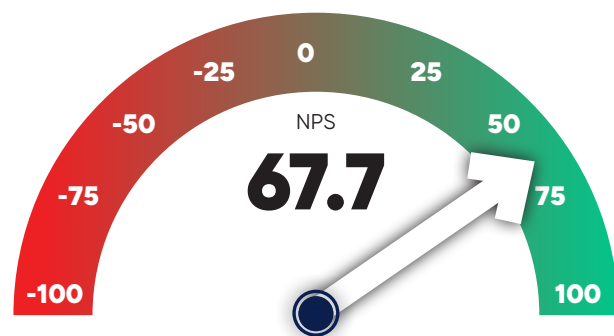
MyGolf Program

MyGolf, Australia's national junior introductory program for children aged 5 to 12, is the primary driver of junior golf participation and highlights the vital role of PGA Professionals.

In 2024/25, PGA Professionals independently delivered 3,703 programs, while community instructors conducted 530, with both groups collaborating on 202 programs. Overall, PGA Professionals were involved in 88% of all programs delivered, underscoring their critical contribution to the program's success and its mission to grow junior participation in golf.

2024/25 delivered the program's highest participation on record: registrations rose to 40,736 (+11.2%), including 13,542 girls, supported by a record 480 venues (+1.9%). Growth was particularly strong in the Northern Territory (+36.4%) and Western Australia (+34.0%), with 18 new centres established across New South Wales and Queensland.

NET PROMOTER SCORE



Considering your complete experience with MyGolf, how likely would you be to recommend the program for children of a friend or family member?

Table 2: MyGolf participants

	2023/24			2024/25			% Total Change
	Boys	Girls	Total	Boys	Girls	Total	
NSW	3,074	1,204	4,278	3,616	1,531	5,147	20.3%
NT	552	244	796	664	422	1,086	36.4%
QLD	8,799	3,963	12,762	8,629	5,048	13,677	7.2%
SA	2,066	927	2,993	2,481	1,094	3,575	19.4%
TAS	884	634	1,518	843	776	1,619	6.7%
VIC	8,755	3,285	12,040	9,095	3,515	12,610	4.7%
WA	1,521	735	2,256	1,866	1,156	3,022	34.0%
Total	25,651	10,992	36,643	27,194	13,542	40,736	11.2%

Table 3: MyGolf programs

	PGA Pro Only Run Programs	Community Instructor Only Run Programs	Combined PGA & Community Instructor Run Programs	Total Programs
NSW	597	49	28	667
NT	13	32	10	61
QLD	1,129	110	37	1,280
SA	300	46	23	370
TAS	140	39	3	158
VIC	1,204	223	61	1,516
WA	320	31	40	383
Overall	3,703	530	202	4,435

Table 4: MyGolf centres

	2023/24	2024/25	% change
NSW	86	97	12.8%
NT	10	9	-10.0%
QLD	106	113	6.6%
SA	43	44	2.3%
TAS	25	24	-4.0%
VIC	155	143	-7.7%
WA	46	50	8.7%
Overall	471	480	1.9%



11.2%

INCREASE IN
MYGOLF
REGISTRATIONS





Get Into Golf

Get Into Golf has a clear ambition: to support clubs and venues in attracting new adult participants to the game.

In 2024/25, the program delivered another strong year, achieving:

- › 10.1% increase in total registrations;
- › 11.6% increase in total female registrations;
- › 5.2% increase in active centres;
- › 15.9% increase in total programs delivered.

PGA Professionals led, delivering independently 2,842 programs, community instructors conducted 439 programs, and both groups collaborated on 109 programs. Overall, PGA Professionals were involved in 87.1% of all programs delivered, underscoring their central role in the program's success and its mission to engage new participants into our sport and facilities.

Engagement from women remained a defining strength, with 87.9% of participants female. Inclusivity also broadened: 25.8% of participants were born overseas (up from 23.9%), reflecting deliberate efforts to extend golf's reach across diverse community groups.

Table 5: Get Into Golf participants

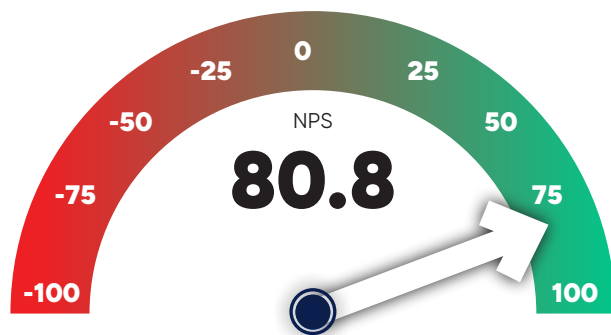
	Total Participants				Women Participants	
	2022/23	2023/24	2024/25	% change	2024/25	% Women
NSW	1,058	1,633	2,347	43.7%	2,255	96.1%
NT	358	388	559	44.1%	481	86.0%
QLD	5,482	5,934	7,031	18.5%	6,482	92.2%
SA	716	1,139	1,611	41.4%	1,414	87.8%
TAS	827	838	912	8.8%	669	73.4%
VIC	6,021	7,020	6,468	-7.9%	5,396	83.4%
WA	635	1,350	1,228	-9.0%	1,029	83.8%
Total	15,097	18,302	20,156	10.1%	17,726	87.9%

Table 6: Get Into Golf programs and centres

	PGA Pro Only Run Programs	Community Instructor Only Run Programs	Combined PGA & Community Instructor Run Programs	Total Programs	Active Centres
NSW	394	31	18	443	54
NT	38	25	5	68	10
QLD	867	36	12	915	83
SA	238	24	3	265	34
TAS	193	28	0	221	23
VIC	962	282	21	1,265	115
WA	150	13	50	213	42
Total	2,842	439	109	3,390	361

10.1%
INCREASE IN
TOTAL
REGISTRATIONS

NET PROMOTER SCORE



Considering your complete experience with Get Into Golf, how likely would you be to recommend the program to a friend or family member?

11.6%
INCREASE IN
FEMALE
REGISTRATIONS





TeeMates

TeeMates, our national junior golf community, supports kids and teenagers on their golfing journeys with accessible opportunities across Australia. In its second full year, TeeMates recorded 1,742 total members (+25.2%) and 3,906 event participants (+15.9%) across 80 events (+8.1%).

Program reach also expanded through 61 Youth on Course partners (+45.2%), delivering 3,263 subsidised rounds (+223.1%). These results demonstrate strong momentum in junior participation and broader access pathways nationwide.

1,742
TOTAL
TEEMATES MEMBERS

66.9% BOYS
33.1% GIRLS

8.1%
INCREASE IN
TEEMATES EVENTS
OFFERED

25.2%
INCREASE IN
TEEMATES
MEMBERS

Table 7: TeeMates total member numbers

	Total Members			% Boys	% Girls
	2023/24	2024/25	% change		
NSW	29	66	127.6%	39.4%	60.6%
NT	88	128	45.5%	64.8%	35.2%
QLD	794	837	5.4%	69.3%	30.7%
SA	87	102	17.2%	60.8%	39.2%
TAS	58	41	-29.3%	63.4%	36.6%
VIC	257	454	76.7%	68.5%	31.5%
WA	74	106	43.2%	67.0%	33.0%
International	4	8	100.0%	75.0%	25.0%
Total	1,391	1,742	25.2%	66.9%	33.1%

Table 8: TeeMates total events & event participants

	Total Events			Total Event Participants		
	2023/24	2024/25	% change	2023/24	2024/25	% change
NSW	0	0	0.0%	0	0	0.0%
NT	7	11	57.1%	117	276	135.9%
QLD	18	21	16.7%	1709	2,123	24.2%
SA	19	13	-31.6%	525	412	-21.5%
TAS	9	5	-44.4%	260	130	-50.0%
VIC	21	26	23.8%	758	913	20.4%
WA	0	4	0.0%	0	52	0.0%
International	0	0	0.0%	0	0	0.0%
Total	74	80	8.1%	3,369	3,906	15.9%

Table 9: Youth on Course total partners & course rounds

	Total Youth on Course Partners			Total Youth on Course Rounds		
	2023/24	2024/25	% change	2023/24	2024/25	% change
NSW	5	3	-40.0%	0	0	0.0%
NT	2	3	50.0%	0	0	0.0%
QLD	9	16	77.8%	1	491	49000.0%
SA	5	10	100.0%	86	138	60.5%
TAS	4	7	75.0%	19	21	10.5%
VIC	11	16	45.5%	368	1,341	264.4%
WA	6	6	0.0%	536	1,272	137.3%
International	0	0	0.0%	0	0	0.0%
Total	42	61	45.2%	1,010	3,263	223.1%

AGF Junior Girls Scholarship Program

Run nationally, the AGF Junior Girls Scholarship program enables girls aged 9–16 to begin or continue their golf journeys under the guidance of qualified PGA Professionals or National Program Deliverers. The program grants individual scholarships to young girls that enables them to pursue their golfing journeys in a nurturing venue environment.

Since launching in 2021, the program has expanded strongly, with participants up 20.2% from 1,191 girls (2024) to 1,432 girls (2025). Club participation also increased 4.6%, from 153 (2024) to 160 (2025).

Table 10: Junior Girls scholarships

	Total Participants			Total Clubs		
	2023/24	2024/25	% change	2023/24	2024/25	% change
NSW	263	341	29.7%	32	37	15.6%
NT	25	38	52.0%	3	4	33.3%
QLD	214	297	38.8%	27	32	18.5%
SA	135	127	-5.9%	16	15	-6.3%
TAS	74	72	-2.7%	9	7	-22.2%
VIC	362	404	11.6%	50	48	-4.0%
WA	118	153	29.7%	16	17	6.3%
Total	1,191	1,432	20.2%	153	160	4.6%

1,432

TOTAL
PARTICIPANTS



20.2%

INCREASE IN
JUNIOR GIRLS
SCHOLARSHIPS

160

TOTAL
CLUBS INVOLVED

National Program Deliverer Network

The National Program Deliverer (NPD) network, which replaced the former Community Instructor Program, continues to support the growing number of MyGolf, MyGolf Schools and Get Into Golf programs nationwide.

In collaboration with PGA Professionals, NPDs are supporting the delivery of programs, enabling venues to engage a greater number of new participants through these entry-level initiatives.

In FY2024/25, the number of NPD accreditations completed increased by 33.1%, with 26.6% of these achieved by women.

Table 11: National Program Deliverer accreditations

	2023/24	2024/25	% change
Total NPD's	1,725	1,722	-0.2%
Total Active Deliverers	510	417	-22.3%
% Women Active Deliverers	44%	47%	6.4%
Accreditation Completions	441	659	33.1%
Accreditation Women Completions	168	229	26.6%

Table 12: National Program Deliverer accreditations by state

	NPD Accreditations	MyGolf Accreditations	Get Into Golf Accreditations	MyGolf Teacher Accreditations	Total 2024/25
NSW	79	54	37	31	201
NT	17	3	3	14	37
QLD	75	57	45	16	193
SA	49	21	21	18	109
TAS	23	16	8	5	52
VIC	161	80	88	45	374
WA	143	25	23	112	303
Total	547	256	225	241	1,269

33.1%

INCREASE IN
TOTAL
ACCREDITATIONS

26.6%

ACCREDITATIONS
COMPLETED BY
WOMEN

47.0%

NATIONAL PROGRAM
DELIVERERS ARE
WOMEN

PGA Professionals and Program Delivery

Nationally, there are 2,551 Vocational PGA Professionals and 296 PGA Associates that are available to deliver MyGolf, Schools & Get Into Golf Programs.

In 2024/25, there were 6,663 programs delivered by PGA Professionals & PGA Associates, with 308 programs co-delivered by PGA Members and Community Instructors.

Disability Inclusion Program

Golf Australia remains committed to making golf a sport of choice for people living with disability across the country.

ALL ABILITIES PATHWAYS

In partnership with the PGA of Australia and leading disability golf organisations, participation in All Abilities programs and events remained strong in 2025, reflecting the inclusive design of the sport and the flexibility of both MyGolf and Get Into Golf programs to cater for Australians of all abilities.

EVENTS AND CHAMPIONSHIPS

In response to growing participation and demand, Golf Australia expanded the number of Eligibility Classifiers from 2 to 12, following the inaugural National Classifier Workshop held at LIV Golf Adelaide.

This expansion enables greater national access for people with disability to obtain classification and participate in Golf Australia and PGA of Australia All Abilities Events and Championships.

For more information, visit golf.com.au.

ALL ABILITIES PROGRAMS: MYGOLF, GET INTO GOLF AND MYGOLF SCHOOLS

The 2024/25 year marked the accreditation of the 300th PGA All Abilities Coach, achieved through the PGA's industry-based inclusive coaching program.

This growing network of qualified coaches increases access and opportunity for players of all abilities to engage with PGA Professionals and enter the game through national participation programs.

Participation trends show that people with disability are increasingly engaging through mainstream golf programs, reinforcing the game's inclusive nature and demonstrating that golf truly is a sport for all.

Table 13: 2024/25 PGA Professionals and program delivery

	MyGolf	Schools	Get Into Golf	Total
PGA Delivered				
Number of programs	3,703	124	2,836	6,663
% of programs	83.5%	25.6%	84.0%	80.3%
PGA co-delivered with Community Instructor				
Number of programs	202	0	106	308
% of programs	4.6%	0	3.1%	3.7%

Table 14: Disability Inclusion Program

	Total All Abilities Participants			All Abilities Programs
	2023/24	2024/25	% change	
NSW	12	0	-100.0%	0
NT	0	11	0.0%	3
QLD	75	74	-1.3%	13
SA	9	14	55.6%	3
TAS	31	24	-22.6%	6
VIC	167	142	-15.0%	22
WA	287	282	-1.7%	23
Total	581	547	-5.9%	70

Table 15: Number of people who identify as having a disability across all programs

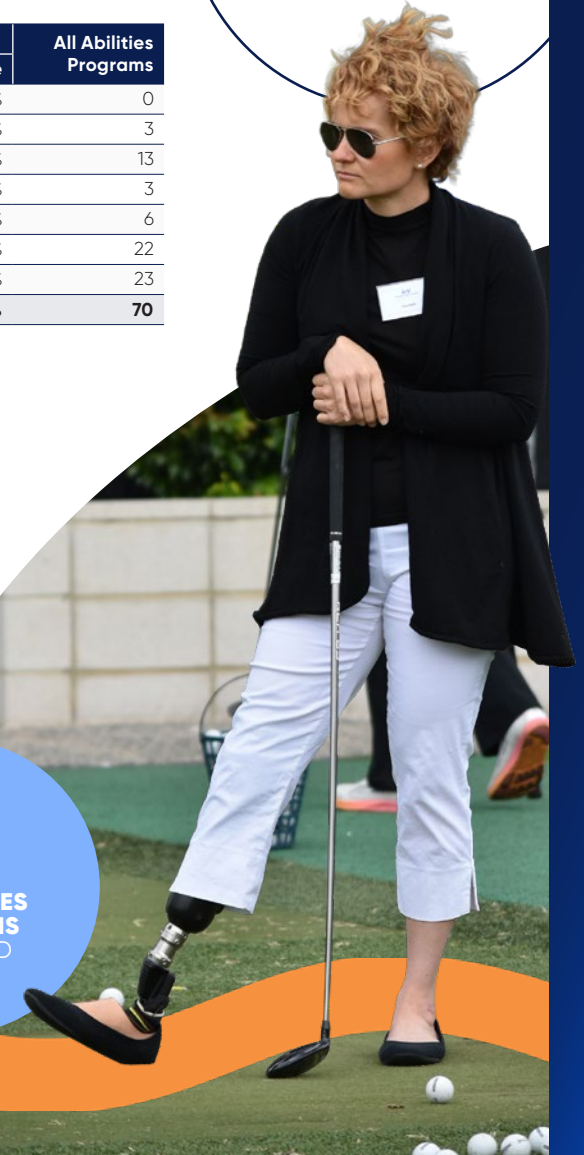
Initiative	2024/25
Get Into Golf	514
MyGolf	1,357
All Abilities Event Participants*	440
Classified Athletes**	244
Total	2,555

* Participants from Golf Australia events

** Players that have been classified and have an eligibility pass for All Abilities events

80.3%

OF ALL PROGRAMS
WERE DELIVERED BY
PGA PROFESSIONALS



547

PARTICIPANTS IN
**ALL ABILITIES
PROGRAMS**

70

**ALL ABILITIES
PROGRAMS
DELIVERED**

06

Club Membership

State Golf Association Reporting

Club golfer numbers are reported annually by the seven state and territory golf association bodies, five of which are operated by Golf Australia. Reported numbers reflect members who pay a capitation fee to their respective body, generally defined as those classified as having a class of membership that provides regular golf course access. Individuals that have a membership (and pay a capitation fee) at more than one club will therefore be counted multiple times.

The respective reporting periods and the respective membership timing they represent are summarised in Table 16.

Table 16: State reporting periods

State	Data Collected
NSW (Includes ACT)	June 2025
VIC	December 2024
QLD	June 2025
SA	December 2024
WA	December 2024
TAS	June 2025
NT	September 2024

Definitions

The following terms, which are referenced in various places throughout the report, are defined as follows:

Member Clubs	Clubs that are fully affiliated with the relevant state body
Social Clubs	Registered clubs without full affiliation, which typically play in allotted tee times at public courses but may also be 'virtual' in nature, that is, creating handicaps for their members to play in any event at any course
Small Clubs	Member clubs with 500 or fewer members
Medium Clubs	Member clubs with 501 to 1,000 members
Large Clubs	Member clubs with over 1,000 members

Playing Members: Overall Results

MEMBERS BY STATE

National membership numbers across Australia for the year 2024/25 are reported as 477,220. This result represents a net 3.5% increase (16,022 members) from 2023/24.

This marks the fifth consecutive year of growth, following the record outcomes of 2020/21, and the first time since 1994 that annual growth has been sustained over five consecutive years.

Membership growth was evident across all markets and segments, with member clubs rising by 2.4% and social clubs recording a notable 14.8% increase.

Growth by gender showed increases of 3.0% for men and 1.1% for women.

Junior membership rose by 18.2% compared to the previous year, underscoring a continued strong engagement among younger players.

% change in member numbers in 2024/25 compared to 2023/24

- Increase 1% to 5%
- Increase less than 1%

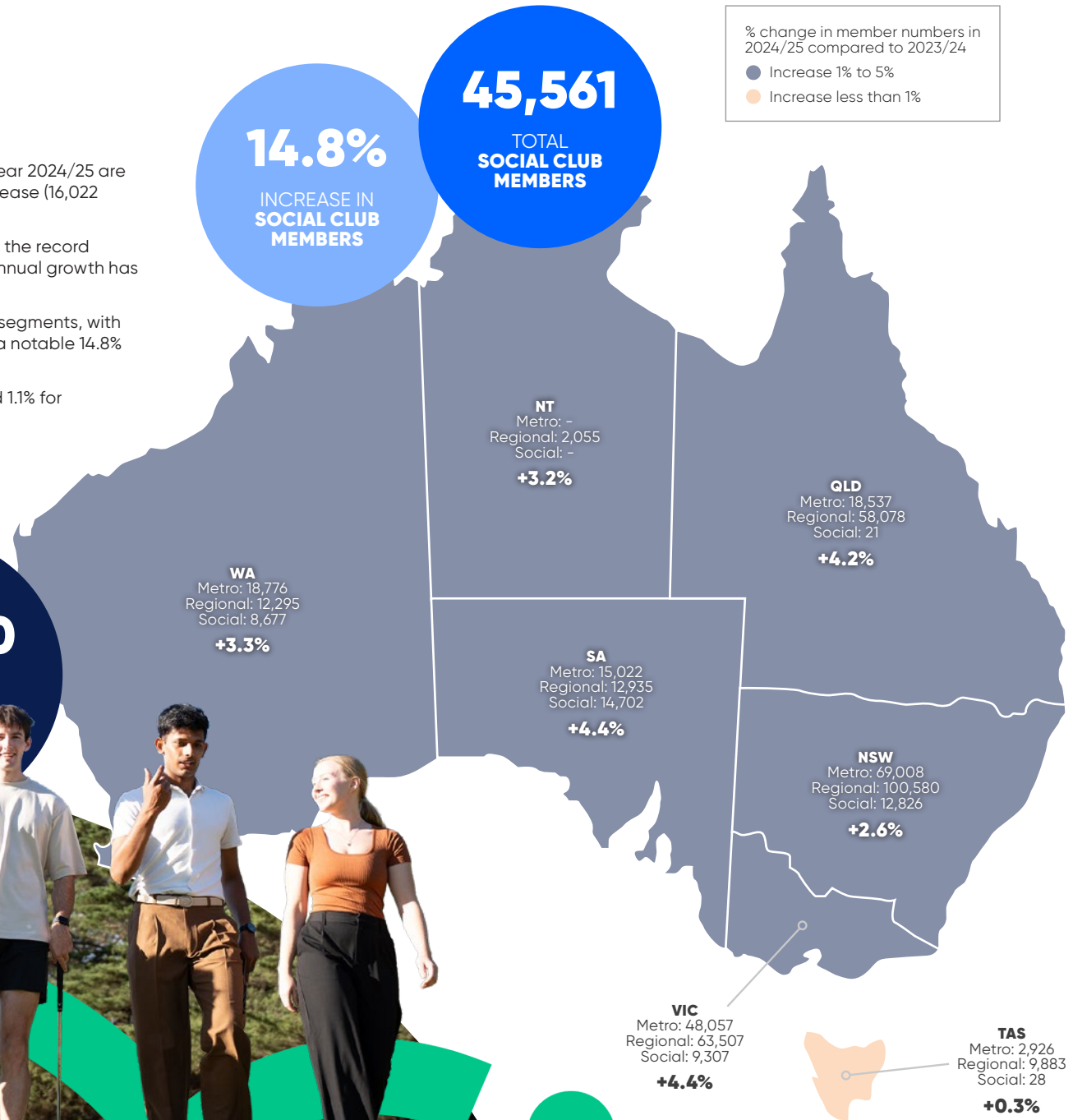


Table 17: 2024/25 playing members by key cohort

	NSW	VIC	QLD	WA	SA	TAS	NT	Overall	% change over 2023/24
Metropolitan	69,008	48,057	18,537	18,776	15,022	2,926	0	172,326	1.5%
Regional	100,580	63,507	58,078	12,295	12,935	9,883	2,055	259,333	3.0%
Social	12,826	9,307	21	8,677	14,702	28	0	45,561	14.8%
	182,414	120,871	76,636	39,748	42,659	12,837	2,055	477,220	3.5%
Men	141,594	91,243	59,298	30,577	34,170	10,063	1,638	368,583	3.0%
Women	29,832	22,476	12,179	7,543	6,417	1,851	320	80,618	1.1%
Adult Total	171,426	113,719	71,477	38,120	40,587	11,914	1,958	449,201	2.7%
Boys	9,611	6,284	4,266	1,341	1,834	827	85	24,248	19.3%
Girls	1,377	868	893	287	238	96	12	3,771	11.5%
Junior Total	10,988	7,152	5,159	1,628	2,072	923	97	28,019	18.2%
Total Men/Boys	151,205	97,527	63,564	31,918	36,004	10,890	1,723	392,831	3.9%
Total Women/Girls	31,209	23,344	13,072	7,830	6,655	1,947	332	84,389	1.5%
Total	182,414	120,871	76,636	39,748	42,659	12,837	2,055	477,220	3.5%
% change over 2023/24	2.6%	4.4%	4.2%	3.3%	4.4%	0.3%	3.2%	3.5%	

Source: Golf Australia & member golf associations

Table 18: Australia year-by-year trend by cohort

	2017/18	2018/19	2019/20	2020/21	2021/22	2022/23	2023/24	2024/25	% Change
Metropolitan	148,680	147,334	147,698	158,119	161,601	164,747	169,812	172,326	1.5%
Regional	212,037	210,718	211,631	229,802	235,294	239,344	251,688	259,333	3.0%
Total Member Clubs	360,717	358,052	359,329	387,921	396,895	404,091	421,500	431,659	2.4%
Social	21,112	24,766	25,284	27,435	29,885	31,987	39,698	45,561	14.8%
Total Members	381,829	382,818	384,613	415,356	426,780	436,078	461,198	477,220	3.5%
Men	294,310	296,411	298,687	325,659	333,478	340,687	357,712	368,583	3.0%
Women	74,907	73,234	72,682	74,117	77,042	77,710	79,777	80,618	1.1%
Boys	10,449	10,859	10,951	13,073	13,497	14,739	20,326	24,248	19.3%
Girls	2,163	2,314	2,293	2,507	2,763	2,942	3,383	3,771	11.5%
Total	381,829	382,818	384,613	415,356	426,780	436,078	461,198	477,220	3.5%
Total Adults	369,217	369,645	371,369	399,776	410,520	418,397	437,489	449,201	2.7%
Total Juniors	12,612	13,173	13,244	15,580	16,260	17,681	23,709	28,019	18.2%
Total Men/Boys	304,759	307,270	309,638	338,732	346,975	355,426	378,038	392,831	3.9%
Total Women/Girls	77,070	75,548	74,975	76,624	79,805	80,652	83,160	84,389	1.5%
Total	381,829	382,818	384,613	415,356	426,780	436,078	461,198	477,220	3.5%

Source: Golf Australia & member golf associations


METROPOLITAN
1.5% Growth
172,326
 Club Members
202 Clubs


REGIONAL
3.0% Growth
259,333
 Club Members
1,080 Clubs



14.8% Growth
45,561
 Club Members

Profile of Australian Clubs

OVERALL FACILITIES

1,282 member clubs reported membership numbers for 2024/25.

Key observations noted from the size profile data outlined in Table 19 includes:

- › 75.3% are classified as small clubs, having less than 500 members.
- › 84.2% (1,080) are in a regional area, with 71.1% of those clubs being classified as small clubs.
- › 15.8% are located in a metropolitan area, only 5.9% (75) of the total being classified as large clubs (i.e. over 1,000 members).

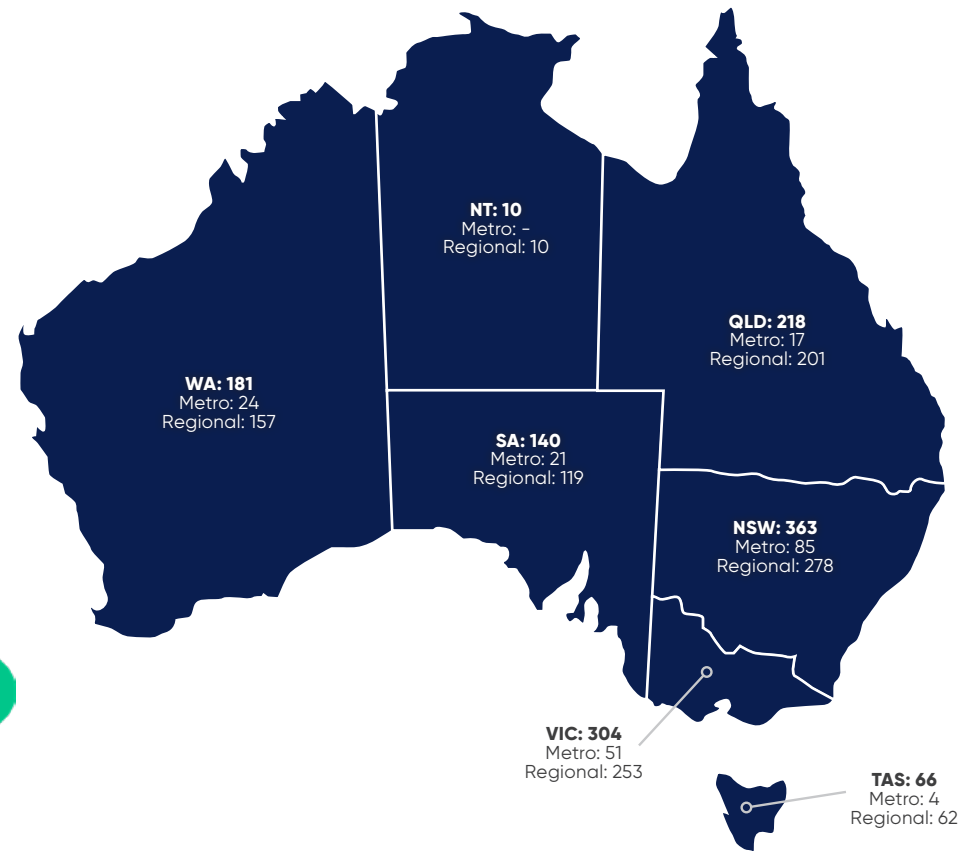


Table 19: Club size profile by geographic area

	NSW	VIC	QLD	WA	SA	TAS	NT	Total	% of Segment	% of Total
METROPOLITAN										
Small	24	12	3	5	8	1	0	53	26.2%	4.1%
Medium	31	17	6	12	5	3	0	74	36.6%	5.8%
Large	30	22	8	7	8	0	0	75	37.1%	5.9%
Total Metropolitan	85	51	17	24	21	4	0	202	100.0%	15.8%
REGIONAL										
Small	206	214	161	149	115	58	9	912	84.4%	71.1%
Medium	44	27	28	8	4	4	1	116	10.7%	9.0%
Large	28	12	12	0	0	0	0	52	4.8%	4.1%
Total Regional	278	253	201	157	119	62	10	1,080	100.0%	84.2%
TOTAL										
Small	230	226	164	154	123	59	9	965	75.3%	75.3%
Medium	75	44	34	20	9	7	1	190	14.8%	14.8%
Large	58	34	20	7	8	0	0	127	9.9%	9.9%
Total Member Clubs	363	304	218	181	140	66	10	1,282	100.0%	100.0%

Source: Golf Australia & member golf associations

Playing Members: Key Segments

MEMBER CLUBS

Nationally, member club participation increased by 2.4% in 2024/25, reflecting combined growth across both metropolitan clubs (+1.5%) and regional clubs (+3.0%). All states recorded increases except South Australia, which experienced a -3.9% decline. Victoria led the growth with a 4.6% increase, closely followed by Queensland at 4.2%.

SOCIAL CLUBS

Social club membership continues to expand, rising by 14.8% over the past year. Over the last five years, growth has averaged 10.7% per annum, with social club members now accounting for 9.5% of total membership nationally.

Growth attributed to South Australia reflects the expansion of Future Golf, a large social club affiliated in that state. In 2025, The SGA Golf Club transferred its affiliation from South Australia to New South Wales, with all historical records reclassified to New South Wales.

METROPOLITAN CLUBS

Metropolitan club membership increased 1.5% year-on-year. Growth was recorded in all states except South Australia and Tasmania, with Western Australia and Victoria leading the way with increases of 2.9% and 2.6%, respectively.

REGIONAL CLUBS

Regional club membership increased 3.0% year-on-year. Growth was recorded in all states except South Australia, led by Victoria with a 6.1% rise.

The share of membership numbers by region for each state is illustrated in Chart 4.

Table 20: Member clubs

	2024/25	% Change
NSW	169,588	1.3%
VIC	111,564	4.6%
QLD	76,615	4.2%
WA	31,071	3.3%
SA	27,957	-3.9%
TAS	12,809	0.3%
NT	2,055	3.2%
Overall	431,659	2.4%

Source: Golf Australia & member golf associations

Table 21: Social clubs

	2024/25	% Change
NSW	12,826	23.2%
VIC	9,307	2.6%
QLD	21	-30.0%
WA	8,677	3.3%
SA	14,702	25.0%
TAS	28	40.0%
NT	0	0.0%
Overall	45,561	14.8%

Source: Golf Australia, member golf associations
NB: There are no affiliated Social Clubs in the Northern Territory.

Table 22: Metropolitan clubs

	2024/25	% Change
NSW	69,008	1.9%
VIC	48,057	2.6%
QLD	18,537	2.5%
WA	18,776	2.9%
SA	15,022	-5.8%
TAS	2,926	-0.9%
NT	0	0.0%
Overall	172,326	1.5%

Source: Golf Australia, member golf associations
NB. This table excludes social clubs

Table 23: Regional clubs

	2024/25	% Change
NSW	100,580	1.0%
VIC	63,507	6.1%
QLD	58,078	4.7%
WA	12,295	4.1%
SA	12,935	-1.5%
TAS	9,883	0.6%
NT	2,055	3.2%
Overall	259,333	3.0%

Source: Golf Australia, member golf associations
NB. This table excludes social clubs

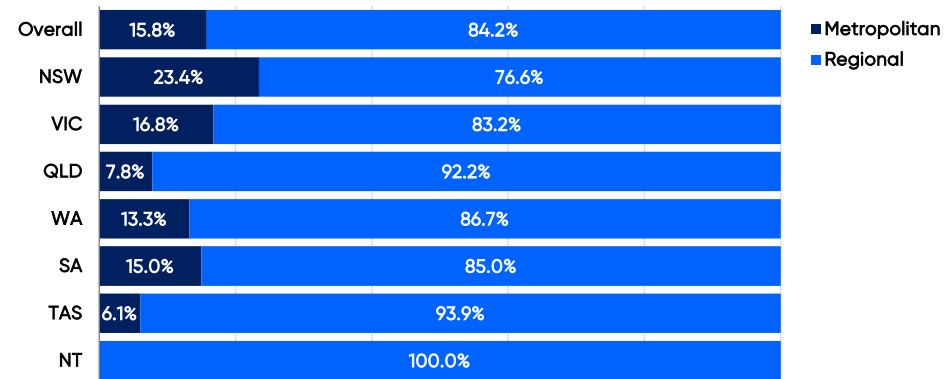


Chart 4: Share of membership numbers by region/club type
Golf Australia & member golf associations

MEMBERS BY GENDER

In 2024/25, total men/boys membership increased 3.9% and women/girls increased 1.5% nationally. Over the past five years, membership has grown by 16.0% for men and boys and 10.1% for women and girls nationally.

Growth for men/boys was strongest in South Australia and Queensland (both +5.0%), while the highest women/girls growth was recorded in Victoria (+2.5%).

The gender mix in 2024/25 shows women/girls comprise 17.7% of total membership. Their share is above the national average in Western Australia (19.7%) and Victoria (19.3%).

Table 24: Men/boys and women/girls members by state

	Men/Boys	% Change	Women/Girls	% change
NSW	151,205	2.9%	31,209	1.2%
VIC	97,527	4.9%	23,344	2.5%
QLD	63,564	5.0%	13,072	0.4%
WA	31,918	3.6%	7,830	2.4%
SA	36,004	5.0%	6,655	1.6%
TAS	10,890	0.9%	1,947	-2.6%
NT	1,723	3.9%	332	-0.3%
Overall	392,831	3.9%	84,389	1.5%

Source: Golf Australia & member golf associations

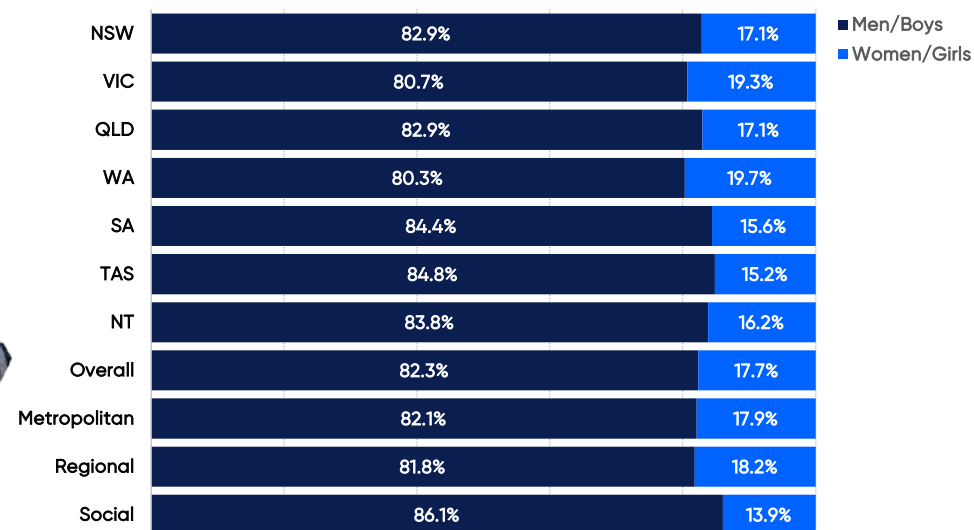


Chart 5: Gender mix by location

Source: Golf Australia & member golf associations



3.9%

MEMBERSHIP GROWTH
MEN/BOYS



1.5%

MEMBERSHIP GROWTH
WOMEN/GIRLS

JUNIORS

Junior members (under the age of 18) totalled 28,019 in 2024/25, an increase of 18.2% year-on-year. Growth was led by Queensland (+36.7%), Victoria (+16.7%) and New South Wales (+14.5%), which combined had 3,804 new junior members join their Clubs.

Juniors now represent 5.9% of total membership nationally, with a slightly higher share at regional clubs (6.8%) than metropolitan clubs (5.9%). Tasmania records the highest junior representation at 7.2% of all club golfers.

Table 25: Junior members by location

	Boys	% change	Girls	% change	Total Juniors	Total % change
NSW	9,611	13.7%	1,377	20.4%	10,988	14.5%
VIC	6,284	17.0%	868	14.7%	7,152	16.7%
QLD	4,266	43.9%	893	10.2%	5,159	36.7%
WA	1,341	17.5%	287	-12.0%	1,628	11.0%
SA	1,834	14.4%	238	-4.0%	2,072	11.9%
TAS	827	12.4%	96	14.3%	923	12.6%
NT	85	37.1%	12	-14.3%	97	27.6%
Overall	24,248	19.3%	3,771	11.5%	28,019	18.2%

Source: Golf Australia & member golf associations

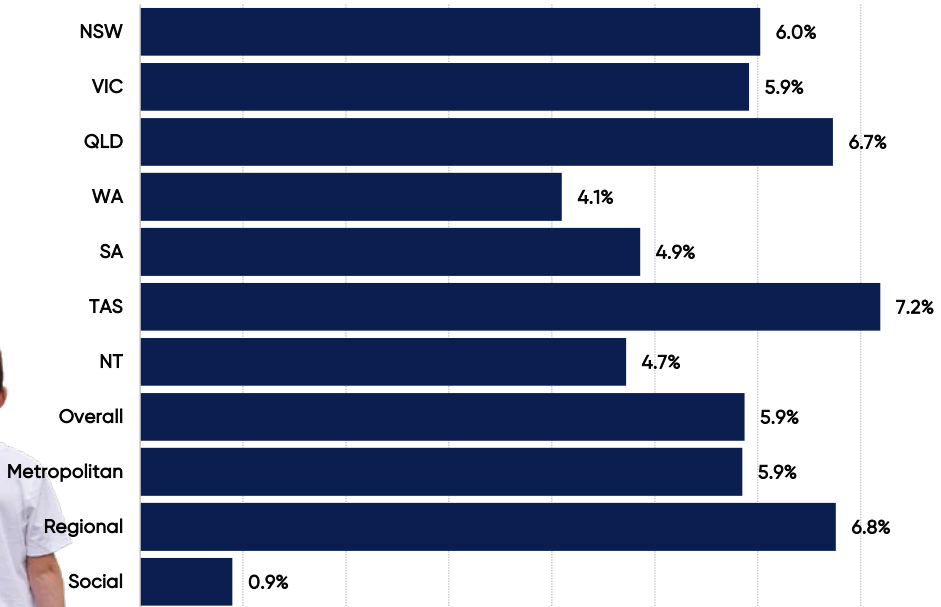


Chart 6: Junior mix by state

Source: Golf Australia & member golf associations

18.2%

INCREASE IN

JUNIOR MEMBERS

JUNIOR MEMBERSHIP

NUMBERS

28,019

24,248 BOYS

3,771 GIRLS



Playing Members: Age Profile

MEMBER AGE PROFILE

The average reported age of club members across Australia is 55.3 years. Men/boys have an average age of 53.5 years (53.1 last year) with women/girls averaging 19% higher at 63.8 years (63.7 last year).

NEW MEMBER AGE PROFILE

New members to golf clubs continue to exhibit a younger age profile than the broader club member age profile. In 2024/25, the average ages of new men/boys members averaged 41.1 years, with new women/girls averaging 52.5 years of age. Approximately 69% of new members were under the age of 55, compared to 43% for existing members.

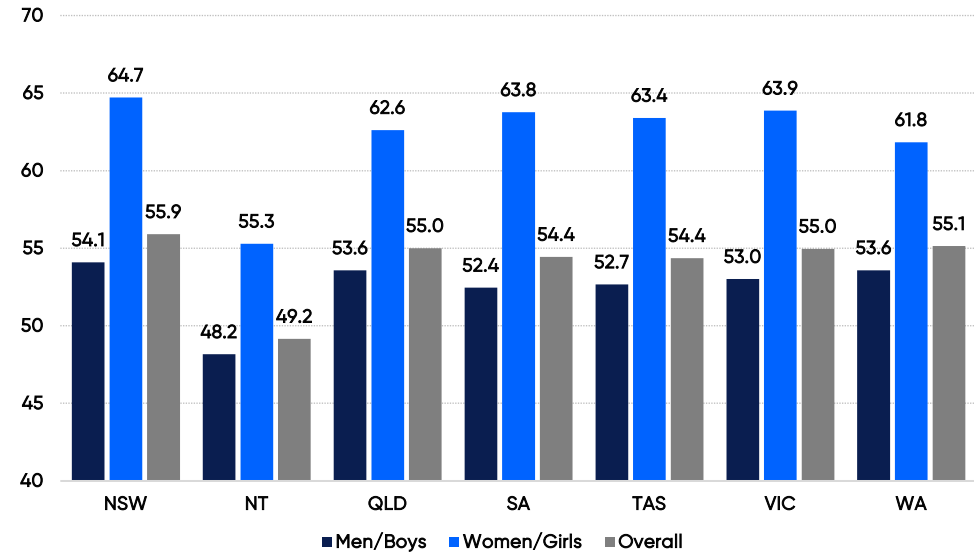


Chart 7: Average member age by state

Source: GOLF Link

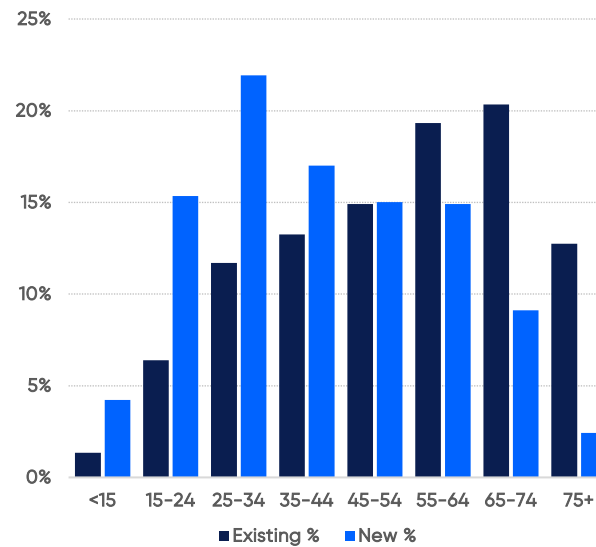
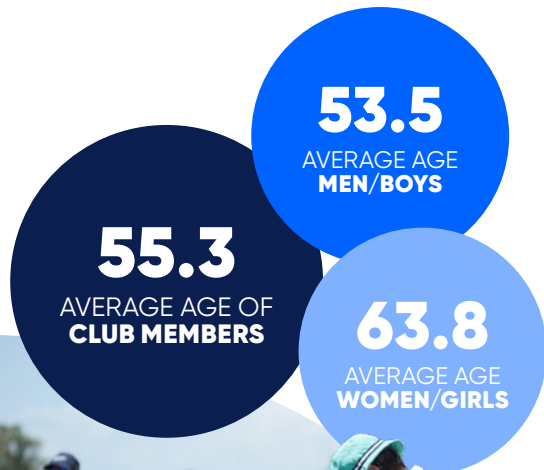


Chart 8: New men/boys members age profile compared to existing members

Source: GOLF Link

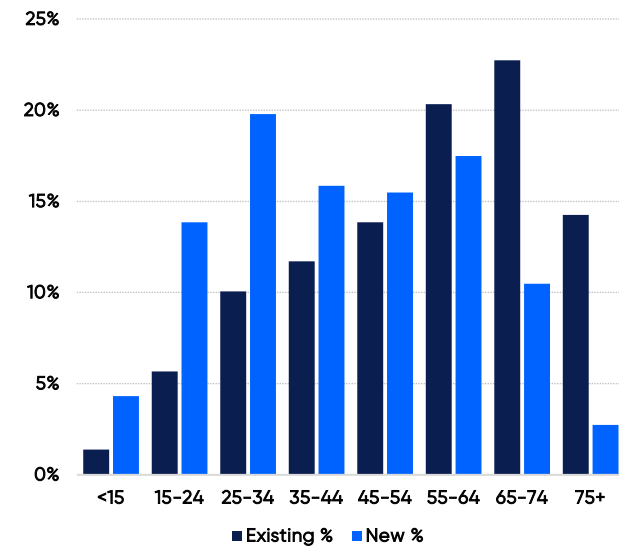


Chart 9: New women/girls members age profile compared to existing members

Source: GOLF Link

AGE PYRAMID: MEMBERS VERSUS POPULATION BY GENDER

Chart 10 illustrates the current mix of club members by gender compared to the broader national population above 10 years of age.

The chart shows a material portion of club members in the 55 years + age bracket – 52.5% of male members and 81.3% of female members – versus a lower national population share of this cohort of 32.3%.

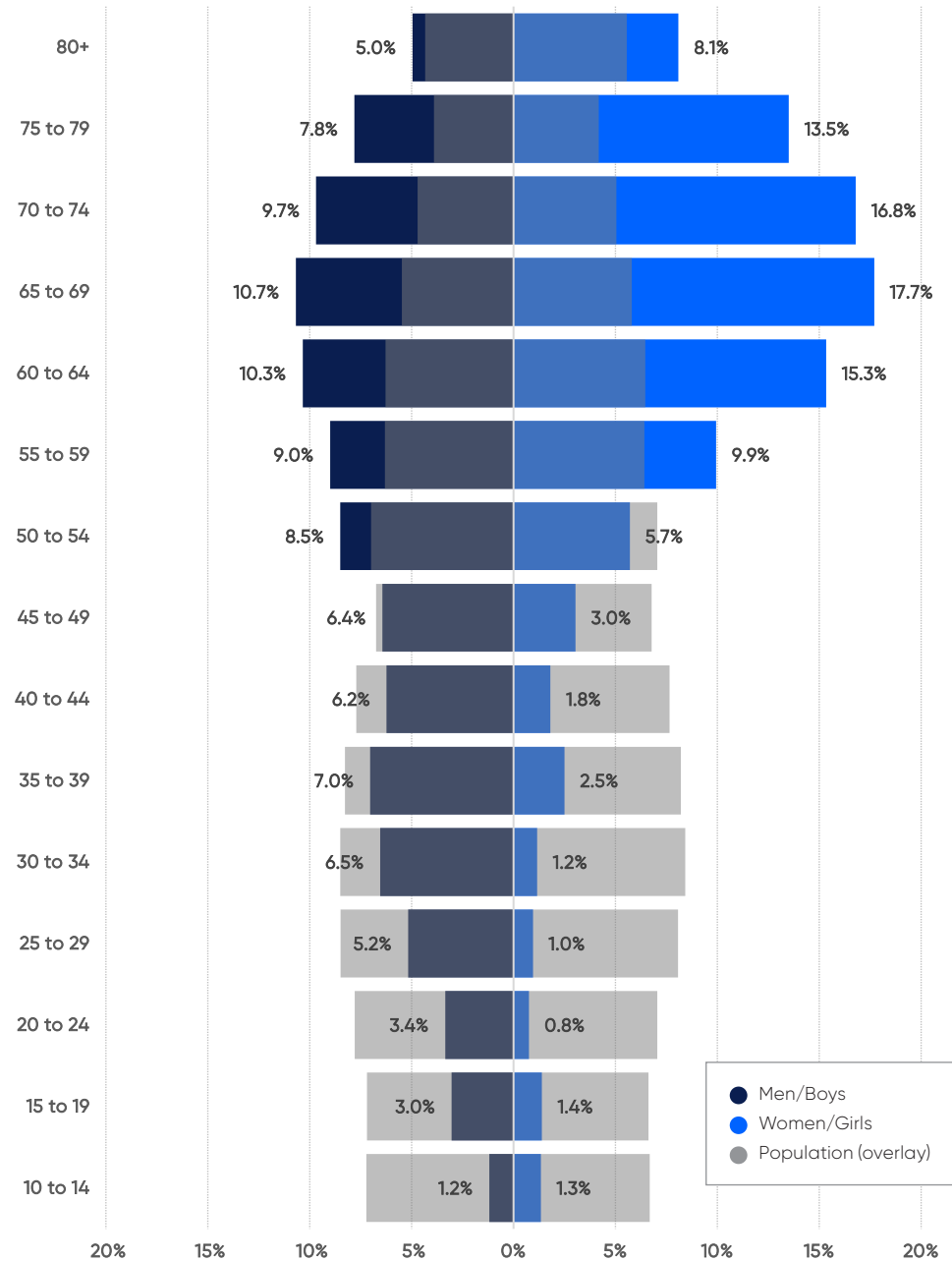


Chart 10: Age pyramid, members versus population

07

Playing Members: Results by State-Based Districts

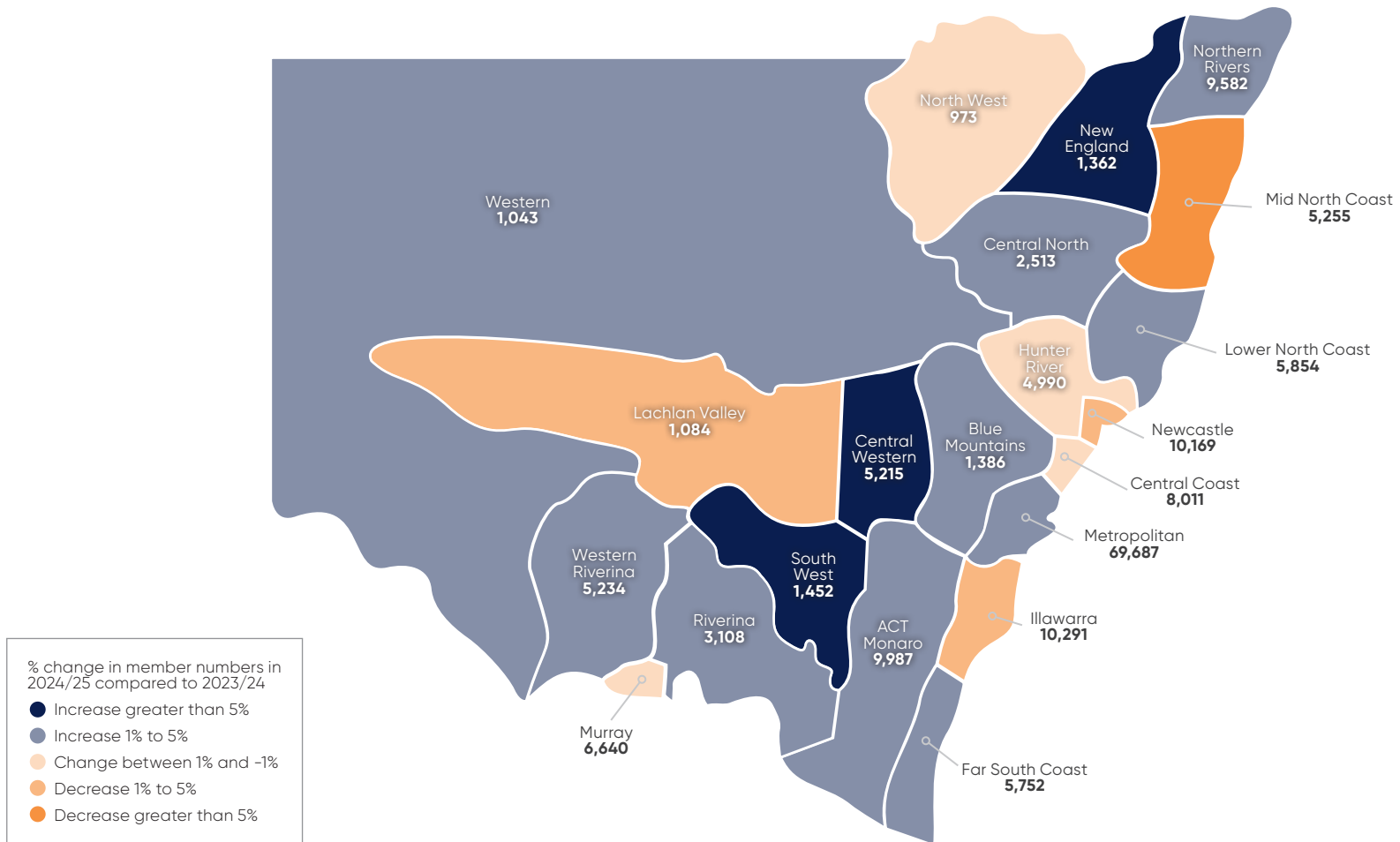
New South Wales

16 of the 21 districts in New South Wales recorded a net increase in membership numbers in 2024/25, led by the South West (+20.5%) and New England (+8.9%) districts.

Table 26: New South Wales membership numbers by cohorts

	2020	2021	2022	2023/24	2024/25	% change
Metropolitan	65,824	65,361	66,205	67,741	69,008	1.9%
Regional	92,186	93,567	95,209	99,622	100,580	1.0%
Total	158,010	158,928	161,414	167,363	169,588	1.3%
Social	4,100	5,798	7,154	10,407	12,826	23.2%
Total	162,110	164,726	168,568	177,770	182,414	2.6%
Men	127,391	129,225	132,209	138,483	141,594	2.2%
Women	28,354	29,010	29,285	29,692	29,832	0.5%
Boys	5,415	5,436	6,011	8,451	9,611	13.7%
Girls	950	1,055	1,063	1,144	1,377	20.4%
Total	162,110	164,726	168,568	177,770	182,414	2.6%

Source: Golf Australia



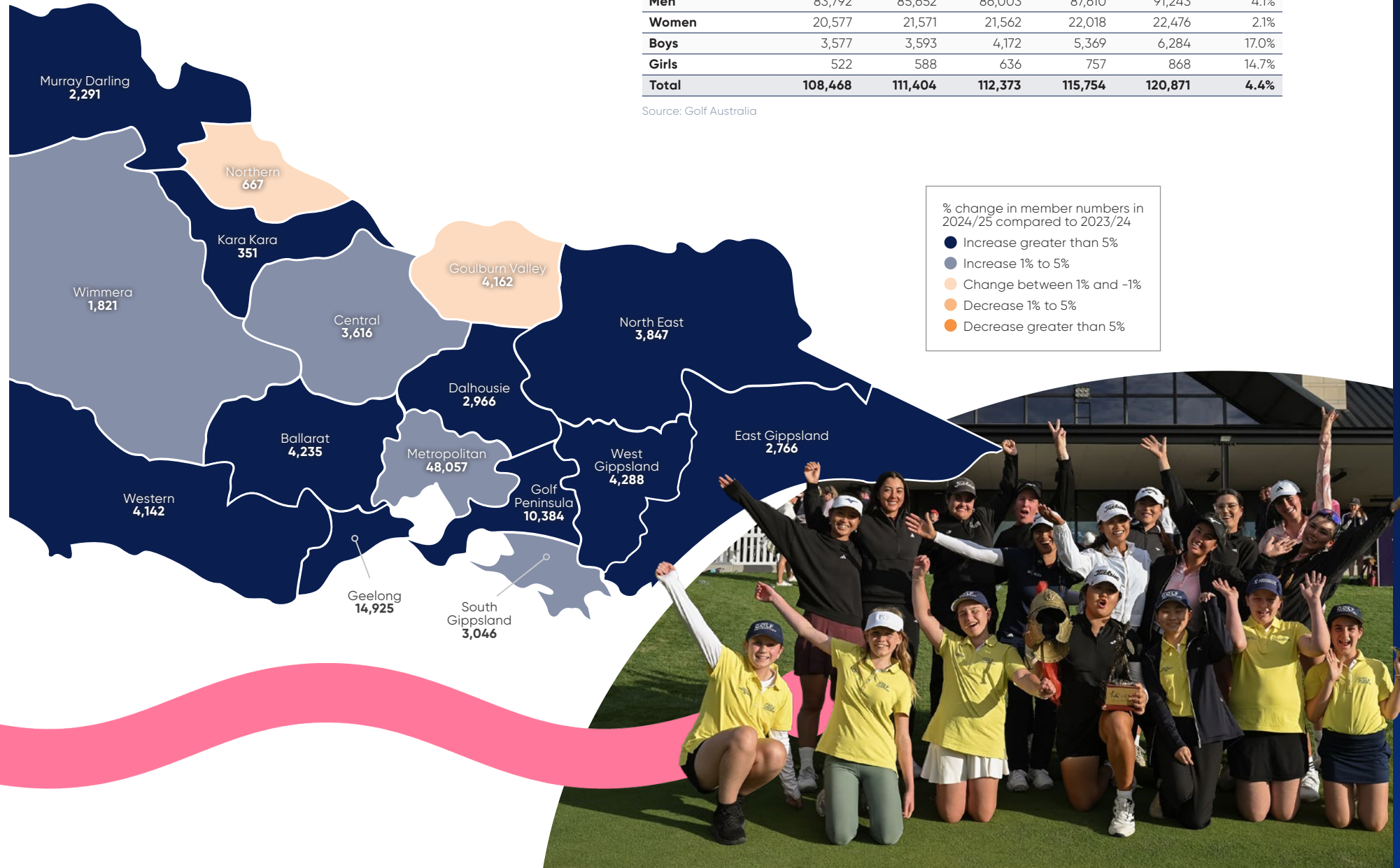
Victoria

14 of the 16 districts in Victoria experienced an increase in member numbers in 2024/25, led by the Kara Kara district (+15.5%), followed by West Gippsland (+9.7%).

Table 27: Victoria membership numbers by cohorts

	2020	2021	2022	2023/24	2024/25	% change
Metropolitan	45,127	46,460	46,843	46,822	48,057	2.6%
Regional	55,038	56,310	56,878	59,858	63,507	6.1%
Total	100,165	102,770	103,721	106,680	111,564	4.6%
Social	8,303	8,634	8,652	9,074	9,307	2.6%
Total	108,468	111,404	112,373	115,754	120,871	4.4%
Men	83,792	85,652	86,003	87,610	91,243	4.1%
Women	20,577	21,571	21,562	22,018	22,476	2.1%
Boys	3,577	3,593	4,172	5,369	6,284	17.0%
Girls	522	588	636	757	868	14.7%
Total	108,468	111,404	112,373	115,754	120,871	4.4%

Source: Golf Australia



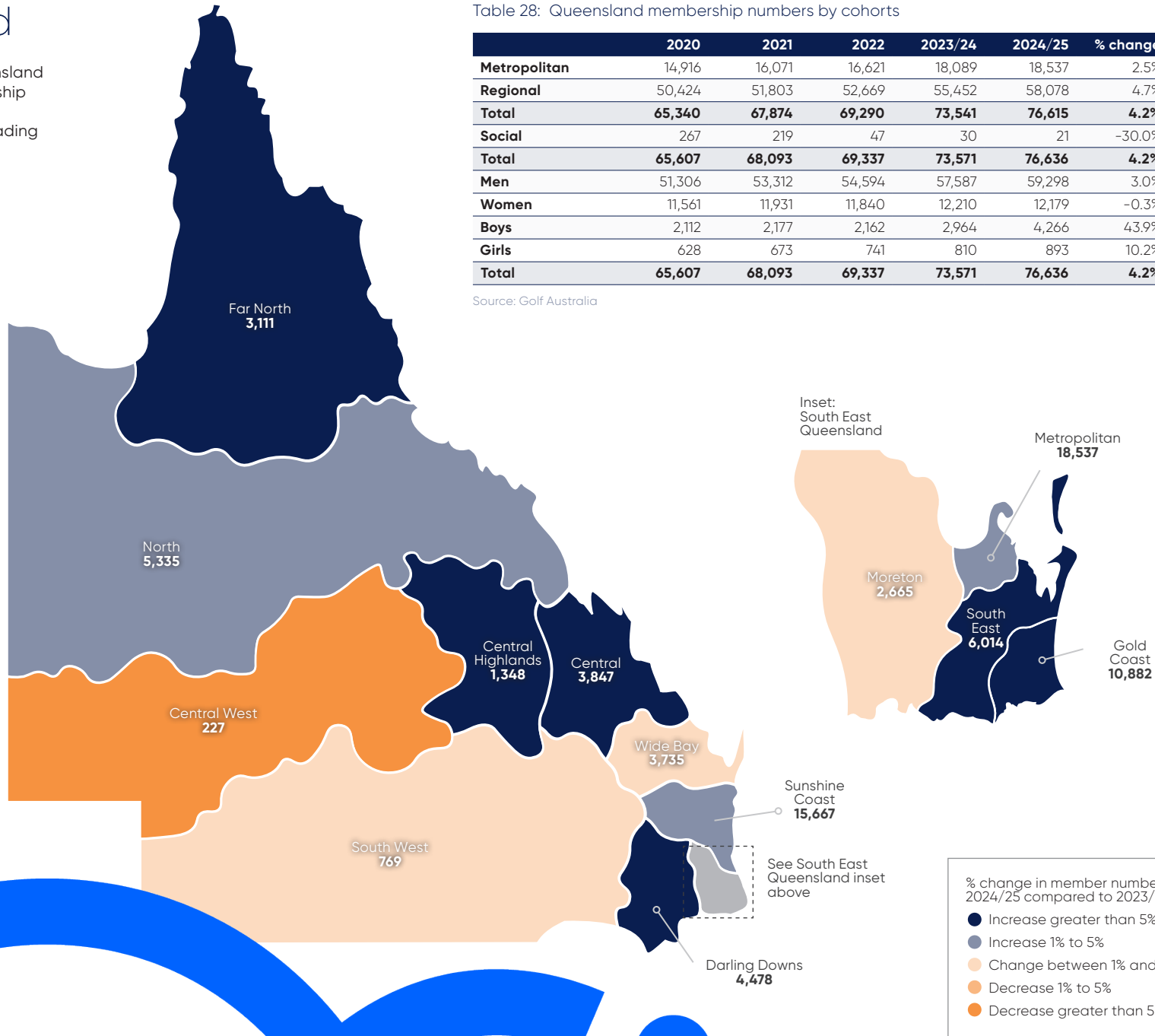
Queensland

10 of the 13 districts in Queensland recorded growth in membership numbers in 2024/25, with the Central Highlands district leading (+26.9%), followed by Central Queensland (+8.5%).

Table 28: Queensland membership numbers by cohorts

	2020	2021	2022	2023/24	2024/25	% change
Metropolitan	14,916	16,071	16,621	18,089	18,537	2.5%
Regional	50,424	51,803	52,669	55,452	58,078	4.7%
Total	65,340	67,874	69,290	73,541	76,615	4.2%
Social	267	219	47	30	21	-30.0%
Total	65,607	68,093	69,337	73,571	76,636	4.2%
Men	51,306	53,312	54,594	57,587	59,298	3.0%
Women	11,561	11,931	11,840	12,210	12,179	-0.3%
Boys	2,112	2,177	2,162	2,964	4,266	43.9%
Girls	628	673	741	810	893	10.2%
Total	65,607	68,093	69,337	73,571	76,636	4.2%

Source: Golf Australia



Western Australia

7 of the 10 districts in Western Australia experienced an increase in member numbers in 2024/25, led by the Peel district (+18.7%), and followed by Great Southern (+7.0%).

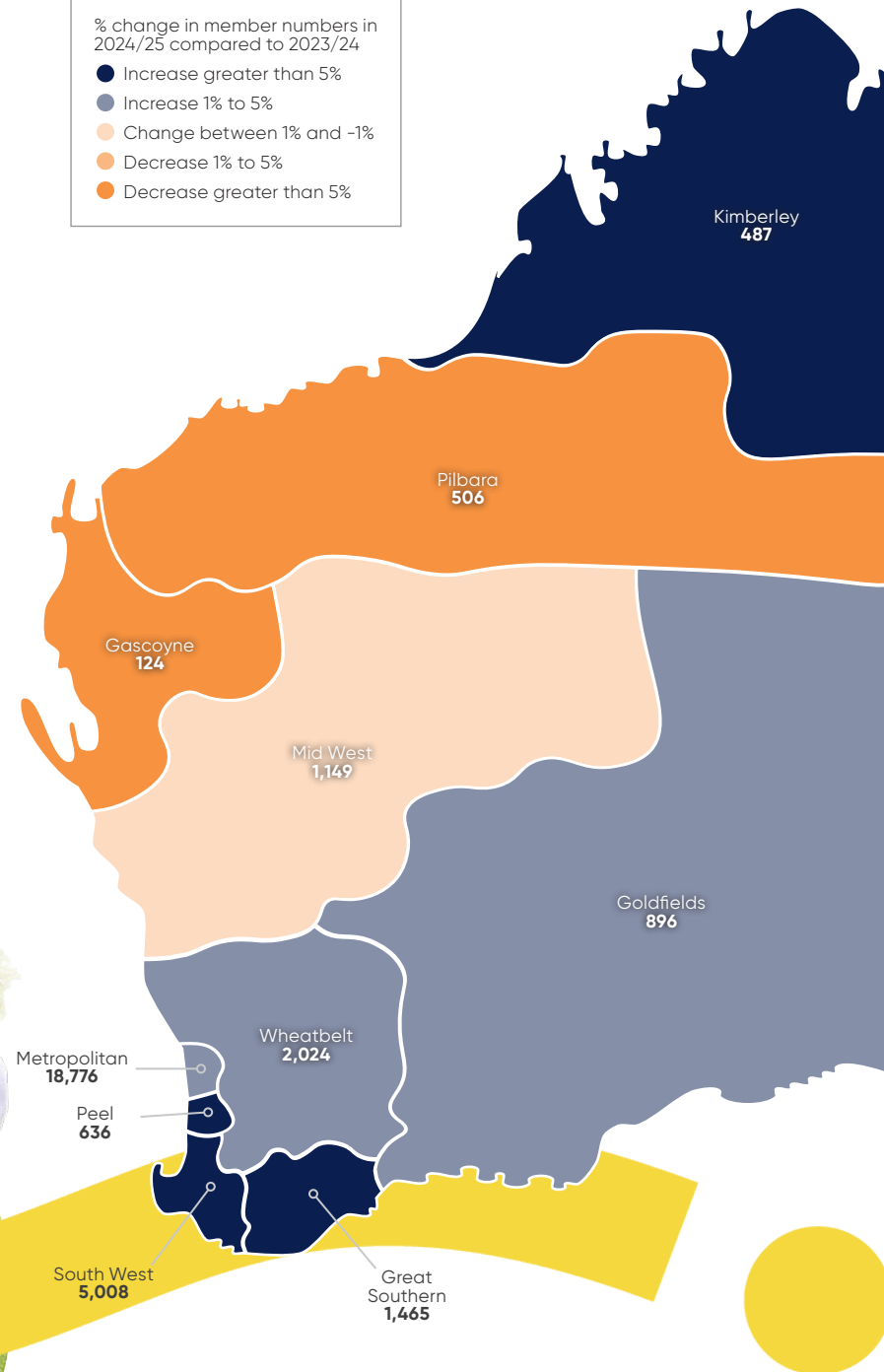
Table 29: Western Australia membership numbers by cohorts

	2020	2021	2022	2023/24	2024/25	% change
Metropolitan	16,403	16,821	17,219	18,254	18,776	2.9%
Regional	10,938	10,978	11,225	11,813	12,295	4.1%
Total	27,341	27,799	28,444	30,067	31,071	3.3%
Social	7,182	7,599	8,156	8,403	8,677	3.3%
Total	34,523	35,398	36,600	38,470	39,748	3.3%
Men	27,000	27,171	28,101	29,681	30,577	3.0%
Women	6,625	7,266	7,459	7,322	7,543	3.0%
Boys	713	766	816	1,141	1,341	17.5%
Girls	185	195	224	326	287	-12.0%
Total	34,523	35,398	36,600	38,470	39,748	3.3%

Source: Golf Australia

% change in member numbers in 2024/25 compared to 2023/24

- Increase greater than 5%
- Increase 1% to 5%
- Change between 1% and -1%
- Decrease 1% to 5%
- Decrease greater than 5%

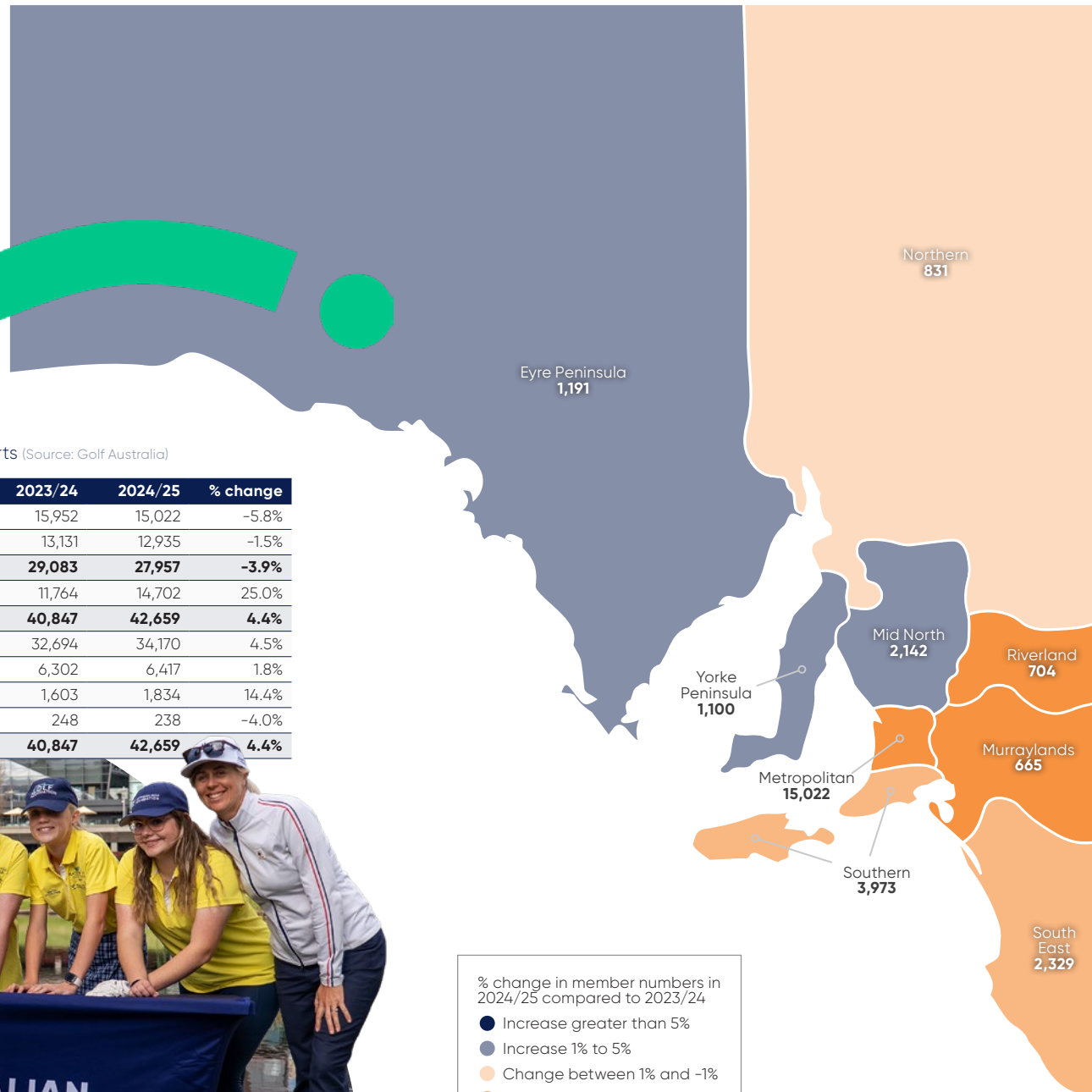


South Australia

4 of the 9 districts in South Australia recorded membership growth 2024/25, led by the Eyre (+4.5%) and Mid North (+3.1%) districts.

Table 30: South Australia membership numbers by cohorts (Source: Golf Australia)

	2020	2021	2022	2023/24	2024/25	% change
Metropolitan	13,680	14,343	15,127	15,952	15,022	-5.8%
Regional	11,090	11,556	12,080	13,131	12,935	-1.5%
Total	24,770	25,899	27,207	29,083	27,957	-3.9%
Social	7,511	7,605	7,954	11,764	14,702	25.0%
Total	32,281	33,504	35,161	40,847	42,659	4.4%
Men	26,118	27,091	28,561	32,694	34,170	4.5%
Women	5,052	5,172	5,346	6,302	6,417	1.8%
Boys	939	1,044	1,054	1,603	1,834	14.4%
Girls	172	197	200	248	238	-4.0%
Total	32,281	33,504	35,161	40,847	42,659	4.4%



% change in member numbers in 2024/25 compared to 2023/24

- Increase greater than 5%
- Increase 1% to 5%
- Change between 1% and -1%
- Decrease 1% to 5%
- Decrease greater than 5%



Tasmania

Only the Southern Country district in Tasmania recorded an increase in 2024/25, with a 2.4% rise in membership.

Table 31: Tasmania membership numbers by cohorts

	2020	2021	2022	2023/24	2024/25	% change
Metropolitan	2,169	2,545	2,732	2,954	2,926	-0.9%
Regional	8,184	8,945	9,298	9,820	9,883	0.6%
Total	10,353	11,490	12,030	12,774	12,809	0.3%
Social	72	30	24	20	28	40.0%
Total	10,425	11,520	12,054	12,794	12,837	0.3%
Men	8,491	9,301	9,628	10,060	10,063	0.0%
Women	1,631	1,749	1,889	1,914	1,851	-3.3%
Boys	269	430	475	736	827	12.4%
Girls	34	40	62	84	96	14.3%
Total	10,425	11,520	12,054	12,794	12,837	0.3%

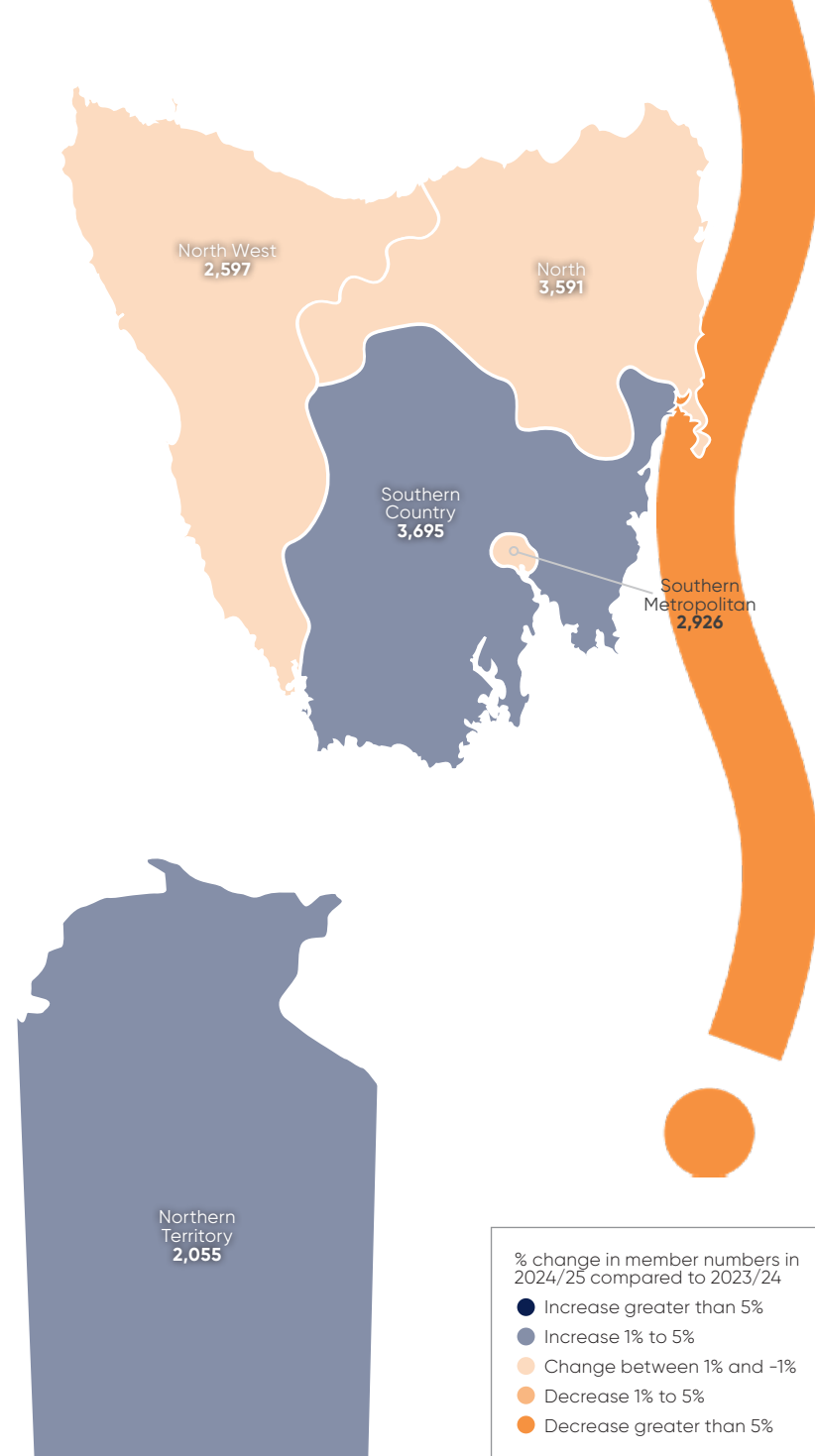
Source: Golf Australia

Northern Territory

Table 32: Northern Territory membership numbers by cohorts

	2020	2021	2022	2023/24	2024/25	% change
Metropolitan	0	0	0	0	0	0.0%
Regional	1,942	2,135	1,985	1,992	2,055	3.2%
Total	1,942	2,135	1,985	1,992	2,055	3.2%
Social	0	0	0	0	0	
Total	1,942	2,135	1,985	1,992	2,055	3.2%
Men	1,561	1,726	1,591	1,597	1,638	2.6%
Women	317	343	329	319	320	0.3%
Boys	48	51	49	62	85	37.1%
Girls	16	15	16	14	12	-14.3%
Total	1,942	2,135	1,985	1,992	2,055	3.2%

Source: Golf Australia



08

Competition Rounds

Total competition rounds

Total competition rounds played in 2024/25 were largely flat over 2023/24, steady at 12.25 million. Despite overall membership growth, wet weather on the east coast impacted these results.

Average competition rounds per member

(The following analysis includes members from Member Clubs only).

With playing members increasing in 2024/25, average annual rounds played on a per member basis (those playing one round or more) fell by 2.3% to 30.3 rounds. WA remains the state with the highest average playing frequency.

Average competition rounds per member by age

Consistent with prior year, average competition rounds played by age cohort steadily grow through to peak with the 70 year age group, averaging 40 rounds per year in 2024/25.

The 40-44 and 45-49 year age groups are the first two groups that are smaller than their prior age group, reflecting the multiple priorities faced at this age juncture.

Table 33: Total competition rounds

	2021/22	2022/23	2023/24	2024/25	% change
NSW	4,071,012	4,161,802	4,554,595	4,453,684	-2.2%
VIC	2,460,567	2,834,470	3,203,318	3,320,680	3.7%
QLD	1,886,868	2,090,046	2,116,134	2,028,879	-4.1%
WA	1,101,527	1,101,674	1,143,888	1,151,008	0.6%
SA	864,202	840,369	897,296	918,489	2.4%
TAS	305,390	305,156	334,641	325,970	-2.6%
NT	48,891	48,392	49,978	51,824	3.7%
Total	10,738,457	11,381,909	12,299,850	12,250,534	-0.4%

Source: GOLF Link, Golf Australia

Table 34: Average competition rounds per member

	2021/22	2022/23	2023/24	2024/25	% change
NSW	28.2	28.8	30.9	30.0	-2.9%
VIC	24.7	27.5	31.4	31.4	0.0%
QLD	27.7	29.8	29.2	27.9	-4.7%
WA	32.8	33.2	34.5	33.3	-3.7%
SA	30.4	29.4	31.2	31.2	-0.1%
TAS	28.0	27.6	30.5	29.4	-3.4%
NT	23.8	23.4	23.2	23.5	1.2%
Total	27.7	29.0	31.0	30.3	-2.3%

Source: GOLF Link, Golf Australia

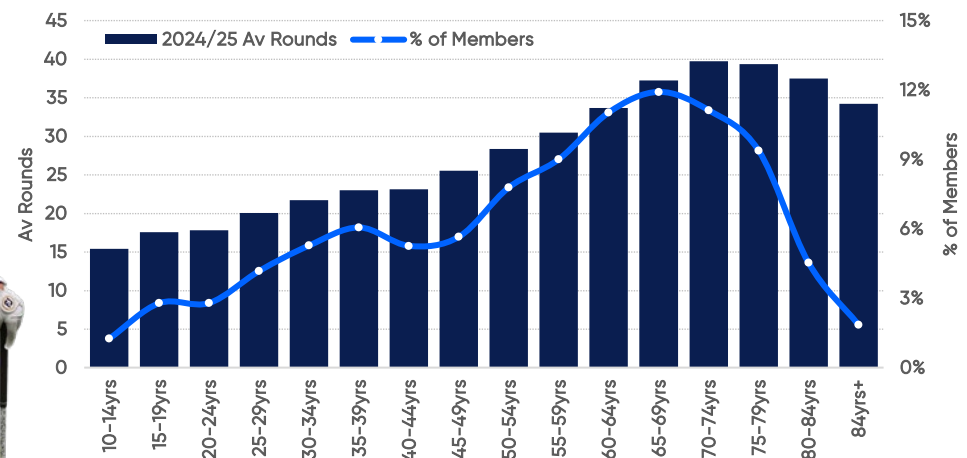


Chart 11: Average competition rounds by age cohort





w golf.com.au
e email@golf.com.au

Australian Golf Centre
Sandringham Golf Links,
Cheltenham Road,
Cheltenham, VIC 3192
Australia